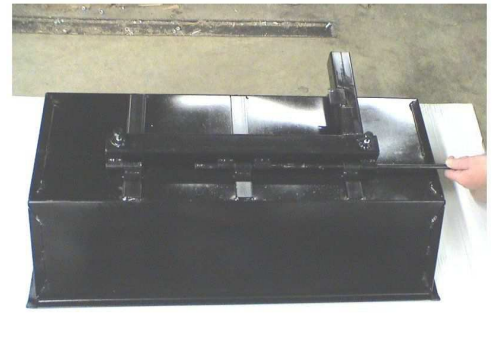


Zero Turn Quick Dump



1ea Dump Bed, 1ea Main Support Frame, 2ea attachment legs, 2ea sets frame mounts, 1ea handle, 1ea poly cord, 1ea handle spring, 1ea 5/16 x 3" bolt and locknut, 2ea 1/2 x 1 1/2 bolt, 4ea 3/8 x 2 3/4" bolts, 4ea 3/8 flat washers, 4ea 3/8 lockwashers, 4ea 3/8 nuts, 3ea 1/8 x 1 1/4 cotter pins, 2ea 3/4 x 3" pivot pins, 1ea 1/2 x 24 1/2" pivot pin.

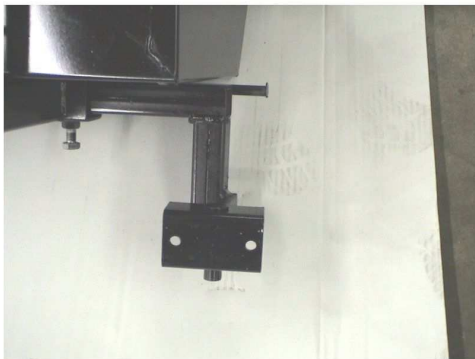
Slide pivot rod through main support frame and secure with cotter pin



Slide each attachment leg into the support frame and tighten the 2ea 1/2 x 1 1/2 bolts finger tight

Install frame mounts onto the caster support frame of the mower using the supplied bolts, nuts, washers, U-brackets and backer plates

Attach handle using 5/16 x 3" bolt and nut. Install spring in the shown position.



Elevate handle to the up position to lock the dump bed.

Set the assembled Quick-Dump unit into the U-brackets and secure with the supplied 3/4 x 3" pins and cotter pins. Tighten main support bolts on the bottom of the unit securely.

Attach supplied Poly Cord to the back of the dump bed and the release handle.

CMI Country Manufacturing, Inc.

P.O. Box 104 333 Salem Avenue
 Fredericktown, Ohio 43019
 Phone: (740) 694-9926
 Fax: (740) 694-5088
 Web Site: www.countrymanufacturing.com